



BRASSELER
USA®

RazorFlex™

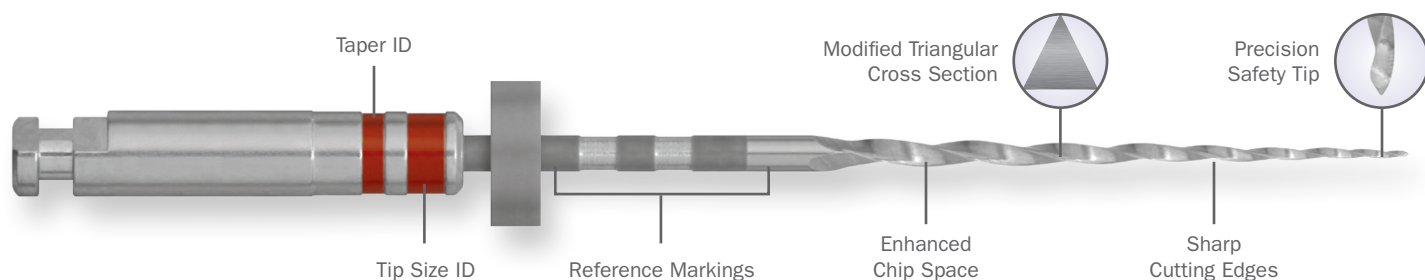
NiTi Rotary Files



BY YOUR SIDE

UNCOMPROMISED QUALITY & PERFORMANCE

RazorFlex files are manufactured with Brasseler's exclusive Austenite NiTi alloy. The hardened NiTi and modified flute geometry deliver excellent cutting efficiency and torsional resistance. RazorFlex files are subjected to Brasseler's extremely tight quality control standards and exhibit uncompromised performance. The extensive range of tip sizes and tapers allows you to quickly incorporate RazorFlex files into your treatment philosophy.



RAZORFLEX™ CLINICAL TIPS

- Always reach full working length to at least a #15/.02 prior to use of rotary files.
- 500-600 RPMs.
- 1.8-2.3 Ncm.
- Use a feather-light touch taking the file to engagement (not resistance).
- Use the Single Stroke and Clean Technique. Clean the flutes after each gentle engagement.
- Irrigate between each rotary file.
- Obturate the canals using BC Sealer™ and the corresponding BC Point™.

RAZORFLEX™ PRODUCT OFFERING (4/PACK)

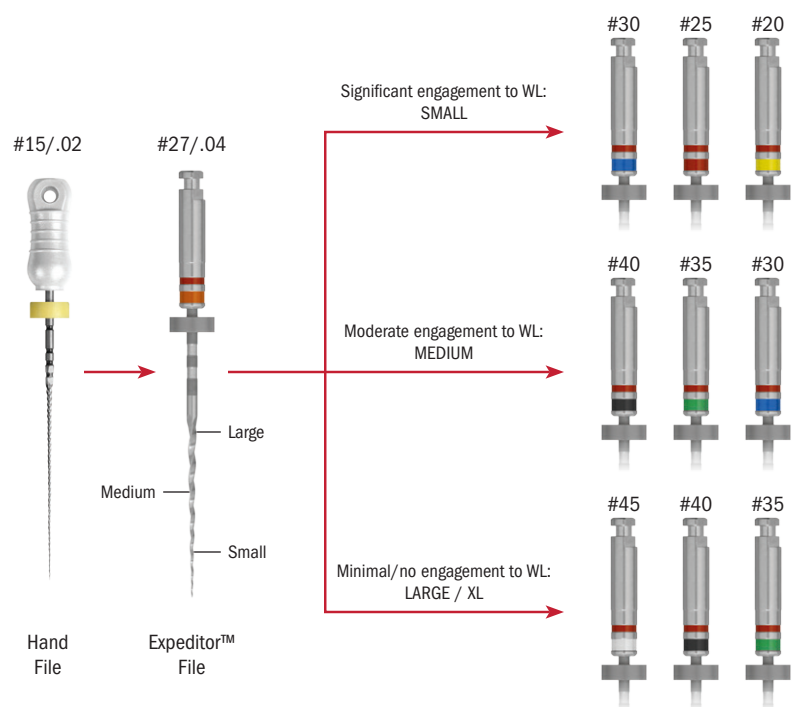
File/ Tip ID	Tip Size	.04 Taper		.05 Taper		.06 Taper		.08 Taper
		21 mm	25 mm	21 mm	25 mm	21 mm	25 mm	19 mm
△ White	15	5025131U0	5025138U0	—	—	—	—	—
▲ Purple	17	—	—	5025146U0	5025147U0	—	—	—
▲ Yellow	20	5025132U0	5025139U0	—	—	5025148U0	5025149U0	5025145U0
▲ Red	25	5025133U0	5025140U0	5025150U0	5025151U0	—	—	—
▲ Orange	27	5025152U0	—	—	—	—	—	—
▲ Blue	30	5025134U0	5025141U0	5025155U0	5025159U0	—	—	—
▲ Green	35	5025135U0	5025142U0	—	—	—	—	—
▲ Black	40	5025136U0	5025143U0	—	—	—	—	—
△ White	45	5025137U0	5025144U0	—	—	—	—	—
▲ Yellow	50	5025153U0	5025154U0	—	—	—	—	—

CONSTANT TAPER SHAPING PHILOSOPHY

RAZORFLEX™ CROWN DOWN TECHNIQUE

Compare to *EndoSequence®* or *Vortex®*

- Estimate the canal size based on the pre-op X-ray, the fit of the stainless steel hand file and the initial depth of penetration of the #27/.04 Expeditor™. Canal size is generally small, medium or large.
- Begin with the largest file in the sequence and move to the next smallest file after 4-5 strokes of single engagement.
- The canal is fully prepared when full working length has been reached.
- If there is minimal apical engagement, consider finishing the canal to the next largest file in the sequence.

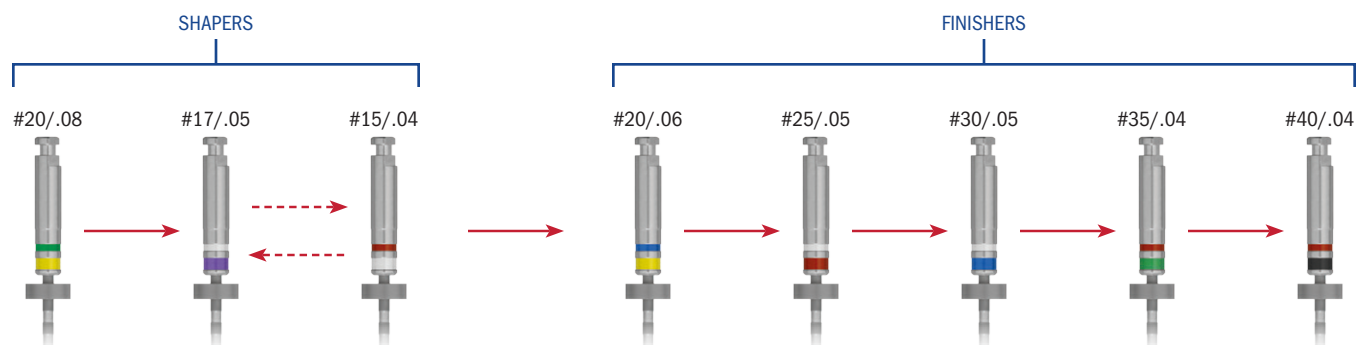


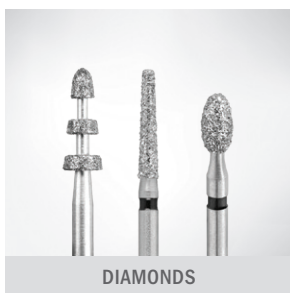
VARIABLE TAPER SHAPING PHILOSOPHY

RAZORFLEX™ VARIABLE TAPER TECHNIQUE

Compare to *BioRaCe™* or *ProTaper®*

- Begin sequence with #20/.08 taper engaging only 2-3 mm into the canal. Do not take to working length.
- Proceed using the #17/.05. If significant resistance is met, do not force the file; use the #15/.04 and return to the #17/.05 to blend the shape to working length.
- Proceed using variable taper technique using the files in a progressive series. Move to the next file after the current file reaches working length.

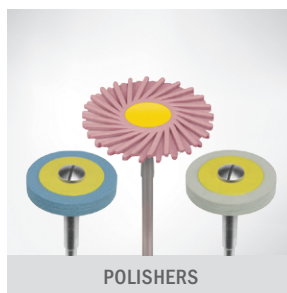




DIAMONDS



CARBIDES



POLISHERS



PROCEDURE SYSTEMS



BIOCERAMICS



Since 1976, our absolute focus has been to develop products and provide services that support the practice of core operatory procedures. Today, Brasseler USA® is the premier dental instrumentation company in North America offering the most extensive selection of dental and surgical instrumentation under one brand.



HANDPIECES



ENDODONTICS



SMALL EQUIPMENT



HYGIENE



HAND INSTRUMENTS



ORAL SURGERY



LABORATORY INSTRUMENTS



Visit our website at BrasselerUSA.com

To order call 800.841.4522 or fax 888.610.1937. In Canada call 800.363.3838

