



**BRASSLER**  
USA®

BY YOUR SIDE

# Evanesce™

Nano-Enhanced Universal Restorative

- ▶ Restorations That Disappear
- ▶ Exceptional Handling
- ▶ A Complete Restorative System



powered by  
**Clinician's Choice**

▶ Order online at [BrasselerUSA.com](https://BrasselerUSA.com) or call 800.841.4522.



# Evanescence Nano-Enhanced Universal Restorative Composite



Before



After Anterior Build-Up and Shade Change

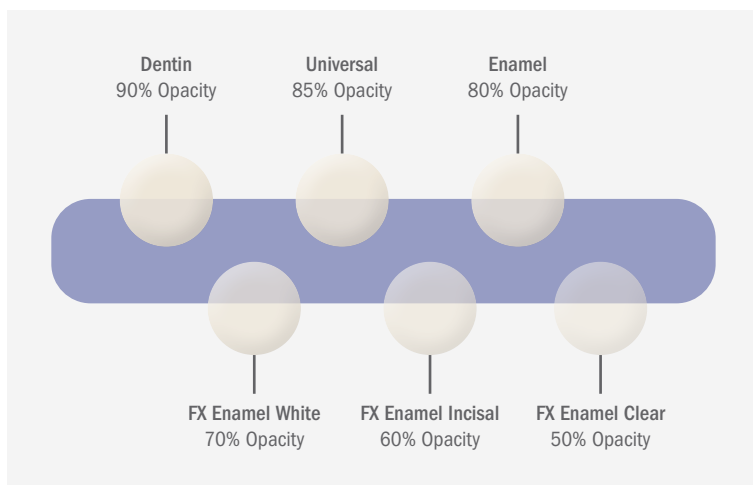
Dentistry and photography courtesy of Marcos Vargas, BDB, DDS, MS

## For Restorations That Disappear

Evanescence Nano-Enhanced Universal Restorative is designed for both simple and complex cases. To Evanescence means to disappear gradually; vanish; fade away. True to its name, Evanescence composite blends effortlessly with natural dentition. Formulated with a proprietary process to optimize the refractive index of its unique nano pigments and fillers, you'll be amazed with its polishability and its ability to disappear or what we call its "Evanescence effect." Truly amazing esthetics can be easily achieved with Evanescence and its simple technique often requires only a single shade or, in more complex cases, fewer layers of composite.

## Exceptional Handling

Beyond beautiful esthetics, Evanescence exhibits putty-like handling. With the assistance of rheological modifiers, Evanescence adapts during placement and manipulation yet is absolutely slump-free when you take your instrument or brush away, holding its form until you polymerize. Now you can build the most detailed anatomy or place the thinnest layers, for an infinity edge, with ease.



## A Complete Restorative System

Truly a universal composite for both anterior and posterior cases, Evanescence is strong, has low shrinkage, and packs beautifully into Class I and II preparations. Evanescence is available in 30 VITA shades in three opacity options: Enamel (80%), Universal (85%), and Dentin (90%).

To further enhance esthetic enamel characterization, there are three non-VITA "FX Enamel" shades: Enamel White for creating lingual shelf and small incisal defects, Enamel Incisal for incisal placement, and Enamel Clear for enhancing facial lobes.

## Use with Evanescence

### Compo-Ject™ Compule Dispensing Gun

Lightweight and durable, the Compo-Ject is a unique metal instrument designed for all brands of composite compules.

Order No. 20003



### ResinBlend LV Composite Blending (3mL)

A resin wetting agent that enables enhanced manipulation of all composites without altering their physical or optical properties.

Order No. 151201-B



► Order online at [BrasselerUSA.com](https://BrasselerUSA.com) or call 800.841.4522.



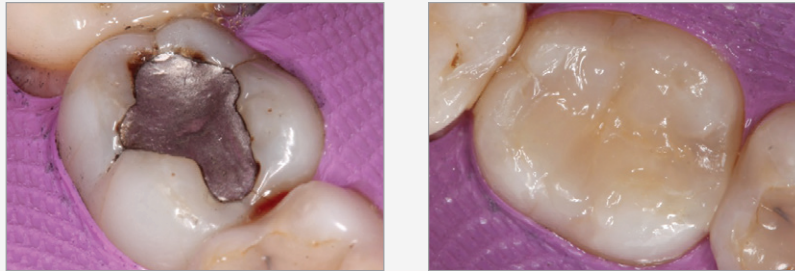
**BRASSLER**  
USA®

powered by  
**Clinician's Choice**

# Evanescence Nano-Enhanced Universal Restorative Composite

## ► Clinical Technique

### Posterior Class I



Evanescence packs beautifully into Class I and II preparations when compared to other composites—especially bulk-fill materials. Superior non-slump handling allows you to create occlusal grooves and ridges; minimizing finishing time.

*Dentistry and photography courtesy of Daniele Larose, DDS, AAACD*

### Match to Porcelain



Matching composite material to porcelain is a common clinical challenge. The Evanescence range of opacities and outstanding polishability make porcelain matching cases significantly easier. Evanescence is a truly universal restorative system.

*Dentistry and photography courtesy of Daniele Larose, DDS, AAACD*

### Multi-Shade Emergency Anterior Case



Active adolescent presents with a second Class IV fracture.

A lingual shelf built with Evanescence Enamel FX White, followed by Evanescence A2 Dentin, opaquers, and then overlaid with Evanescence A1 Enamel. (Immediately post-op: shown before tooth re-hydration)

*Dentistry and photography courtesy of Bob Margeas, DDS*

► Order online at [BrasselerUSA.com](https://BrasselerUSA.com) or call **800.841.4522**.



# Evanescence Nano-Enhanced Universal Restorative Composite

Beautiful esthetics for simple or complex cases can be easily achieved with Evanescence™. Truly universal for both anterior and posterior composite restorations, Evanescence features ideal, slump-free handling and beautiful shade matching to the VITA shade guide. Evanescence is highly polishable for the ultimate in restorative esthetics.

## ► Product Offering



Evanescence Syringe

Shade	Opacity	Size	Order No.	Shade	Opacity	Size	Order No.
A1 Universal	85%	4g	321501-B	A1 Enamel	80%	4g	321507-B
A2 Universal	85%	4g	321502-B	A2 Enamel	80%	4g	321508-B
A3 Universal	85%	4g	321503-B	FX Enamel White	70%	3g	321514-B
A3.5 Universal	85%	4g	321504-B	FX Enamel Incisal	60%	4g	321515-B
B1 Universal	85%	4g	321505-B	FX Enamel Clear	50%	3g	321513-B
B2 Universal	85%	4g	321522-B				

## Evanescence Single Dose Compules



Shade	Opacity	Qty/Pk	Order No.	Shade	Opacity	Qty/Pk	Order No.
A1 Dentin	90%	10	322520-B	BL3 Universal	85%	10	322513-B
A2 Dentin	90%	10	322521-B	C1 Universal	85%	10	322508-B
A3 Dentin	90%	10	322522-B	C2 Universal	85%	20	322509-B
A3.5 Dentin	90%	10	322523-B	C3 Universal	85%	10	322510-B
B1 Dentin	90%	10	322524-B	A1 Enamel	80%	10	322514-B
C4 Dentin	90%	10	322526-B	A2 Enamel	80%	10	322515-B
A1 Universal	85%	20	322501-B	A3 Enamel	80%	10	322516-B
A2 Universal	85%	20	322502-B	A3.5 Enamel	80%	10	322517-B
A3 Universal	85%	20	322503-B	B1 Enamel	80%	10	322518-B
A3.5 Universal	85%	20	322504-B	B2 Enamel	80%	10	322519-B
A4 Universal	85%	10	322505-B	FX Enamel White	70%	10	322533-B
B1 Universal	85%	20	322506-B	FX Enamel Incisal	60%	10	322534-B
B2 Universal	85%	10	322507-B	FX Enamel Clear	50%	10	322535-B
BL1 Universal	85%	10	322511-B				



## Evanescence FX Enamel Single Dose Trial Kit

- 5 FX Enamel White
- 5 FX Enamel Incisal
- 5 FX Enamel Clear

Order No. 325904-B

► Order online at [BrasselerUSA.com](http://BrasselerUSA.com) or call **800.841.4522**.



**BRASSELER**  
USA®

powered by  
**Clinician's Choice**